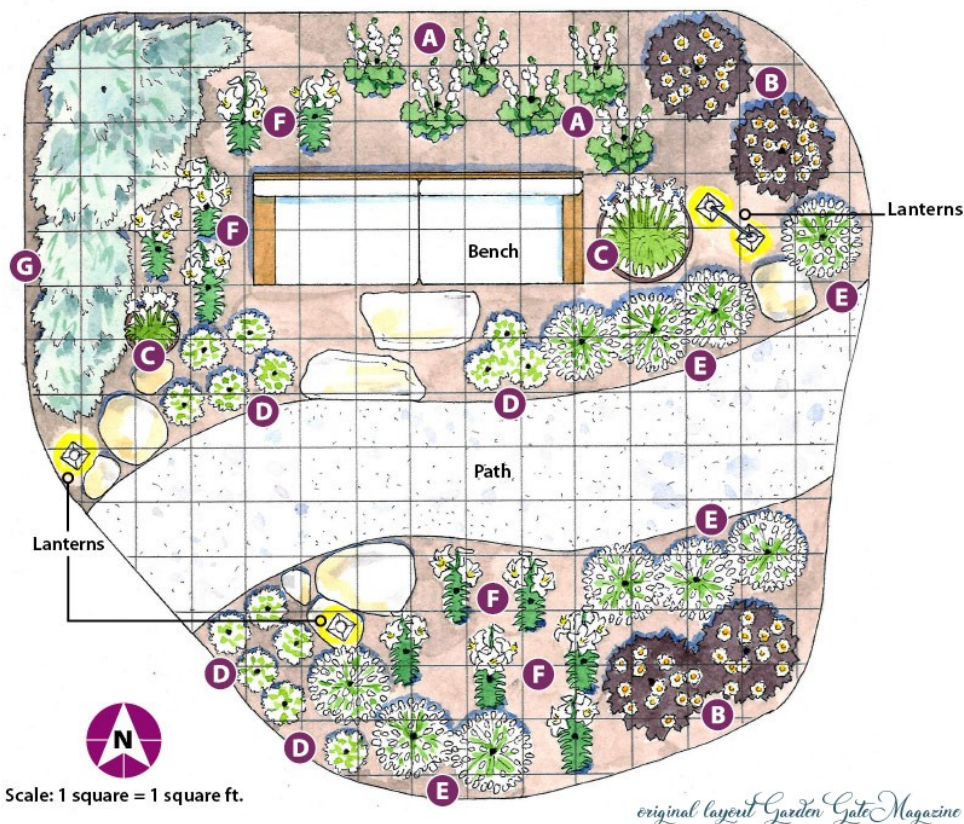




A beautiful combination of whites for a pure and restful atmosphere. Single color gardens aren't boring - there are so many varieties of white flowering plants, and plants with white variegations of foliage, your garden can be serene and romantic. To see a design for Moonlight Gardens, featuring fragrant whites and pale colors, [visit this page](#). You can plant some white blooms that release sweet fragrances after dusk. Plant some night-scented plants around a terrace or patio, near a seating area, near an open window, or along a path.



### **Planting Key and Plants**

- Includes my personal favorite alternatives

**Perennial choices are best for any garden, especially for busy gardeners and beginners.**

#### **A. White Hollyhock**

Perennial. White, double blooms in mid to late summer

**Size** 5 to 7 ft. tall, 1 to 2 ft. wide

**Hardiness** Cold-hardy in USDA zones 2 to 10

**Number to plant** - 6

#### **B. White Dahlia**

- Not hardy. Bulbs must be lifted before frost

**Number to plant** - 4

*My choice as an alternative plant*

**White Casa Blanca Lilies****Perennial**

2-3 ft.

**Number to Plant - 6****C. Tuberose**

Clear white flowers in summer

Needs a long growing season and heat

**Size** 24 to 36 in. tall**Hardiness** Cold-hardy in USDA zones 7 to 10**Plant 40***My choice as an alternative plant:***Perennial White Gladiola****Plant 40 close together.** Stake when needed. Pretty and more stable if planted in tall pots.**D. Night Phlox**

Maroon buds that open to small white flowers in the evening in summer

**Annual****Plant 14***My alternative***Evening Primrose****Perennial**

Winter hardy, spreading perennial grows 10-24 inches tall.

These plants spread a little, so plant about 10 instead of the 14 recommended for phlox. They're not invasive, but if it spreads beyond your plan, transplant some into pretty pots and disperse around the landscape and on the patio. Very pretty and fragrant. Best plan is to grow these in pots to begin with.

**Plant 10****E. Bunny's tail grass (*Lagurus ovatus*)****Annual**

Small, white fuzzy plumes in the summer and fall

**Size** 12 to 24 in. tall, 12 to 18 in. wide**Plant 10***My alternative***Any perennial dwarf ornamental grass** - with white or pale pink plumes, that matures under 24 inches tall and 20 inches wide.**Plant 10****F. Oriental lily 'Casa Blanca'****Perennial**

sources:

original layout:

Garden Gate Magazine

Adaptation and alternate plant list:

marysbloomers.com

Monrovia

*Design, graphics, articles and photos* ©2020 marysbloomers.com™  
All rights reserved.