

GARDEN PLANS

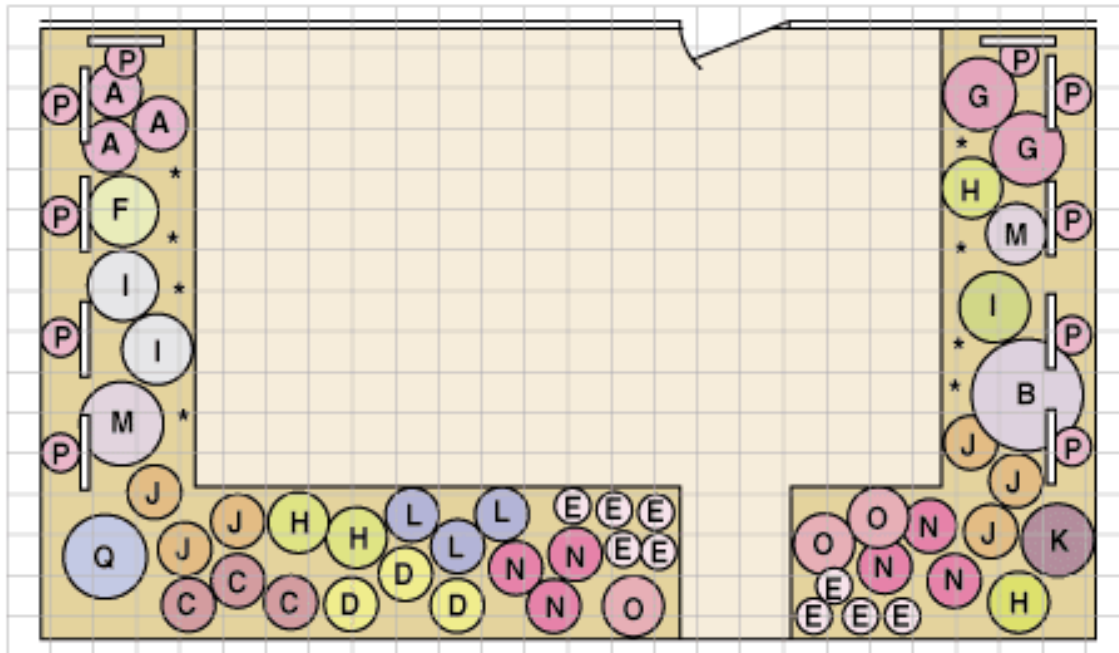


Patio Garden

BASK IN TROPICAL DELIGHT WITH THIS DREAMY PATIO GARDEN.

Flowers and fragrances surround a patio or deck in this garden of perennials. And why not plant your garden right next to where you relax? Many of these perennials boast long seasons of bloom. They're joined by one shrub (the dwarf mockorange) and flowering clematis vines on lattice panels. The lattice panels, which lend a sense of enclosure, can be extended for extra privacy. Or replace them, if you prefer, with an alternative plant—columnar buckthorn shrubs. This garden is best in a spot with at least six hours of sunlight daily.

1 SQUARE = 1 FOOT



PLANT LIST

A Superba Astilbe (*Astilbe chinensis* var. *taquetii* 'Superba') (3)

Zones 4-9. Rosy purple plumes in midsummer. 36" tall.

ALTERNATIVE PLANTS

Krossa Regal Hosta (*Hosta 'Krossa Regal'*) (substitute 1 hosta for 3 astilbes)

Zones 3-8. Vase-shaped plant, blue foliage, tall stalks with lavender blooms. 22" tall.

B Pink Beauty Boltonia (*Boltonia asteroides* 'Pink Beauty') (1)

Zones 4-8. Pink daisy-like flowers in late summer. 4'-5' tall.

ALTERNATIVE PLANTS

Michaelmas Daisy (*Aster novae-angliae* 'Hella Lacy')

Zones 4-9. Deep purple flowers in fall. 48" tall.

C Jupiter's Beard (*Centranthus ruber*) (3)

Zones 4-9. Long-blooming clusters of fragrant red flowers. 24"-36" tall.

ALTERNATIVE PLANTS

Burgundy Blanket Flower (*Gaillardia x grandiflora* 'Burgundy')

Zones 3-9. Rich wine-red flowers. 24"-30" tall.

D Thread Leaf Tickseed (*Coreopsis verticillata* 'Zagreb') (3)

Zones 3-9. Yellow daisy-like flowers, ferny foliage. 15" tall.

ALTERNATIVE PLANTS

Stella de Oro Daylily (*Hemerocallis 'Stella de Oro'*)

Zones 3-9. Bright gold rebloomer. 18" tall.

E Bath's Pink (*Dianthus gratianopolitanus* 'Bath's Pink') (9)

Zones 3-8. Single, pink, fragrant flowers in late spring. 10" tall.

ALTERNATIVE PLANTS

Pink Tickseed (*Coreopsis rosea*)

Zones 3-9. Small rose-pink flowers, fine foliage. 8"-14" tall.

F Gas Plant (*Dictamnus albus*) (1)

Zones 3-8. Fragrant white flowers in early summer. 24"-36" tall.

ALTERNATIVE PLANTS

Japanese Anemone (*Anemone x hybrida* 'Pamina')

Zones 5-8. Rose-purple flowers with yellow centers, late summer to fall. 30" tall.

G Purple Coneflower (*Echinacea purpurea* 'Bright Star') (2)

Zones 3-9. Rose flowers with dark centers. 24"-30" tall.

ALTERNATIVE PLANTS

Bee Balm (*Monarda didyma* 'Marshall's Delight')

Zones 3-7. Clear pink flowers. 30"-36" tall.

H Cushion Spurge (*Euphorbia epithymoides* or *E. polychroma*) (4)

Zones 4-9. Chrome-yellow spring flowers, red fall color. 15" tall.

ALTERNATIVE PLANTS

Showy Stonecrop (*Sedum spectabile* 'Brilliant')

Zones 3-8. Gray-green foliage, rose flowers in fall. 18" tall.

I Joan Senior Daylily (*Hemerocallis 'Joan Senior'*) (3)

Zones 3-9. White with yellow throat, fragrant, midsummer. 20" tall.

ALTERNATIVE PLANTS

Shasta Daisy (*Leucanthemum x superbum 'Alaska'*)

Zones 4-9. Classic white daisy, summer. 24"-36" tall.

J Frosty Coral Bells (*Heuchera sanguinea 'Frosty'*) (6)

Zones 3-8. Bright red flowers, white-splashed foliage. 18"-20" tall.

ALTERNATIVE PLANTS

Variegated Calamint (*Calamintha grandiflora 'Variegata'*)

Zones 3-8. White-flecked leaves, pink flowers. 15"-18" tall.

K Ruffled Velvet Siberian Iris (*Iris sibirica 'Ruffled Velvet'*) (1)

Zones 3-10. Deep violet flowers in late spring. 30" tall.

ALTERNATIVE PLANTS

Spike Gayfeather (*Liatris spicata 'Floristan Violet'*)

Zones 3-9. Purple bottle-brush flowers in summer. 36" tall.

L Munstead Lavender (*Lavandula angustifolia Munstead strain*) (3)

Zones 5-9. Grayish foliage, fragrant lavender spikes in summer. 18" tall.

ALTERNATIVE PLANTS

Blue Hill Salvia (*Salvia x sylvestris 'Blauhuegal'*)

Zones 4-7. Blue flower spikes, late spring through early summer. 20" tall.

M Russian Sage (*Perovskia atriplicifolia*) (2)

Zones 5-10. Aromatic gray-green leaves, lavender-blue flowers, long season of bloom. 48" tall.

ALTERNATIVE PLANTS

David Summer Phlox (*Phlox paniculata 'David'*)

Zones 4-8. White, fragrant flowers in summer. 42" tall.

N Pinafore Pink Summer Phlox (*Phlox paniculata 'Pinafore Pink'*) (6)

Zones 4-8. Clear pink, fragrant flowers in summer. 16" tall.

ALTERNATIVE PLANTS

Pink Mist Pincushion Flower (*Scabiosa columbaria 'Pink Mist'*)

Zones 3-10. Lavender-pink flowers, long blooming season. 12" tall.

O Candy Stripe Moss Phlox (*Phlox subulata 'Candy Stripe'*) (3)

Zones 2-9. Moss-like foliage, pink-and-white flowers in early spring. 4"-6" tall.

ALTERNATIVE PLANTS

Fringed Rock Cress (*Arabis blepharophylla 'Spring Charm'*)

Zones 4-7. Soft rose flowers in early spring. 6"-8" tall.

P Large-Flowered Hybrid Clematis (*Clematis hybrids*) (10)

Zones 5-8. Summer-blooming vines. Many varieties and colors.

Plant below trellises made of 4'x2' lattice panels mounted to 6'x2' frames.

ALTERNATIVE PLANTS

Annual Vines

All zones. Flowering vines such as morning glory, moonflower, cardinal climber, or black-eyed Susan vine can be grown on the trellises.

Columnar Buckthorn (*Rhamnus frangula 'Columnaris'*)

Zones 2-7. Narrow, upright deciduous shrub. No trellises needed. 8'-12' tall.

Q Dwarf Mockorange (*Philadelphus 'Miniature Snowflake'*) (1)

Zones 5-9. Compact shrub. Fragrant white pom-pom blooms in late spring. 2'-3' tall.

ALTERNATIVE PLANTS

Fairy Queen Spirea (*Spirea trilobata 'Fairy Queen'*)

Zones 3-9. Compact shrub with white flowers in late spring. 3' tall.

* Fill in the edges of the patio garden with transplants of white alyssum, parsley, and purple basil, set out in spring (all zones).

Before You Begin. Preparation is the key to creating a garden that will offer a lifetime of pleasure. Before you head to the nursery or lift a spade, take the time to review all garden plan materials. Ask yourself the following questions:

- **Do I have a suitable location for this plan?** The layout diagram shows the dimensions for the plan as designed. In general, you can enlarge or reduce the size of the garden by adding or eliminating plants, although the character of the garden may change if you alter the size dramatically.
- **Does my yard offer the right conditions?** Check the plant list carefully to see whether the plan will do best in full sun, partial shade, or full shade. Also make sure that the plants are suited to your USDA Growing Zone. (In many cases, the alternative plants list includes varieties that will grow in other zones.)
- **Does my soil need improvement?** Most plants will survive in a variety of soil conditions, but well-drained, moist (but not soaked) soil is generally best. To test your soil, wet it thoroughly with a hose, wait 24 hours, then squeeze a clump in your hand. If the soil forms a ball that holds together, but breaks up easily when you poke it with your finger, your soil is ideal. If the soil won't hold its shape when squeezed, it is probably too sandy. If the clump doesn't break up easily, the soil may be too clay. In either case, you can improve your soil by mixing in organic matter like compost or peat moss.
- **Is my soil's pH and fertility okay?** Check at your local garden store for a soil test kit, or inquire about testing at a local county extension service office. Follow the recommendations that come with your test results if you need to correct the soil's pH (how acid or alkaline the soil is) or fertility.

Creating the Bed. To lay out your bed, use a garden hose to mark the edges. When you are satisfied with the layout, use striping paint (available at many home centers) to mark the outline. (Or, sprinkle flour along the hose for a more temporary mark.) Using a sharp spade, dig along the marked line to set the edge of your bed.

If the garden location is currently covered with lawn, you have a couple of options. For smaller areas, you can strip the sod using a straight-edged shovel. To make this easier, wet the area thoroughly, then use the shovel to cut the lawn into strips that are the width of the shovel and about three feet long. (Expert tip: Sharpen the edge of the shovel frequently with a file.) Use the shovel to pry up and roll back the strips of sod. Once the sod is removed, you can loosen the underlying soil with a shovel or a power tiller.

For larger areas covered by lawn, consider using a heavy-duty garden tiller to grind the sod into the underlying soil. This has the twin benefits of adding organic matter to the soil and eliminating the need to discard or compost sod.

Regardless of how you are preparing your bed, be sure to use this opportunity to mix in organic matter (such as compost, peat moss, or rotted manure) and loosen the soil at least 6 inches deep, or even 8 to 12 inches if you can. Don't mix in fertilizer unless your soil test shows a need; in general, excessive amounts of fertilizer will do more harm than good.

After your bed is prepared, water it thoroughly and wait a week. This will allow some weed seeds to germinate. Remove these seedlings or dig them back into the soil. If you choose to use chemicals to kill the weeds, follow the instructions to the letter, including the time to wait after application before planting.

Edging. Most beds are easier to maintain if they have an edging that keeps surrounding grass or vegetation from invading. Choose plastic, metal, stone, or brick -- whatever you prefer. If you have lawn around your bed, consider also including a mowing strip, a 6- to 12-inch-wide swath of masonry or stone set even with the surrounding soil.

Planting. Now comes the fun part! If you have all of your plants on hand, keep them in their pots and set them out on the planting bed. This will give you a preview of how the bed will look and allow you to make adjustments. Use the tags that come with the plants to ensure that the spacing is correct. Don't worry that the bed looks sparse; the young plants need room to grow.

When you're satisfied with the arrangement, plant your garden from largest to smallest container (usually trees first, then shrubs, perennials, and finally annuals). Each plant type does best with a specific planting method:

- **Trees.** Dig a hole that is slightly larger than the pot or root ball and deep enough so the top of the root ball or pot is slightly higher than the surrounding soil. For potted trees, remove the tree from the pot, loosen the soil slightly around the roots, then place the tree into the planting hole. For balled-and-burlapped trees, loosen the burlap after the tree is in the hole, cutting away as much of the burlap as possible. When the tree is in place and straight, fill the hole one-third with soil, tamp firmly to make good contact between roots and soil, then water. Repeat twice more until the hole is filled. Make a shallow collar of soil around the hole to catch water and hold it near the root zone. Water the tree thoroughly by letting a hose run slowly for 30 minutes.
- **Shrubs.** Plant shrubs in a hole that's about twice the diameter of the root ball. The top of the root ball should be slightly above the surrounding soil level. Backfill with garden soil, tamping firmly to ensure a contact between soil and roots. Water immediately by slowly running a hose at the shrub's base for about 20 minutes.
- **Perennials and Annuals.** Set these plants in soil at the same level they were growing in the pot. Firm the soil around each plant with your hands, then water thoroughly.

Mulching. As you place each plant, it's a good idea to add mulch to conserve moisture, cool the roots of plants, and protect the soil from washing away in the rain. Organic mulches like shredded bark will require periodic additions as the mulch decays. Mulches like crushed stone are more permanent, but may not offer the character you prefer.

Aftercare. The first season of growth is the most critical for your garden. A good guideline is to water thoroughly every other day for the first two weeks, then twice weekly for the remainder of the first season. The following year, you can let nature take its course, supplementing dry periods with deep watering.

You should also be diligent about weeding your bed during the first year. As the plants mature and fill in, there will be fewer opportunities for weeds to gain a foothold. A thick layer of mulch will also help keep weeds in check.

Ongoing Maintenance. Most plants will thrive with only minimal care. Apply a general fertilizer according to package directions in the spring after growth has started. If you need to prune trees or shrubs to maintain their shape or size, do it in late winter before growth has started. The exception to this general rule is spring-flowering shrubs like lilacs that should be pruned immediately after flowering.

GET \$5 OFF!

USE CODE **BHGSD** AT CHECKOUT!

COUPON EXPIRES 12/31/2012.

Get \$5.00 off your purchase of \$50
in the BHG Garden Store. Use code
BHGSD at checkout for your discount!

Shop Now



Rare, award
winning!
Shows 3 colors
at once.

Vanilla Strawberry™ Hydrangea

Tri-colored award-winning hydrangea!
New flower heads continue to open
into late summer. Grows 6-7 feet tall.

Buy Now



Our editor's
favorite!
Reblooming &
compact!

Reblooming Lilac

Bloomerang® Lilac fills out with purple-
pink, sweetly scented blooms in May
and flowers throughout summer.

Buy Now



Very rare,
unique, and
compact!

Wedding Gown Hydrangea

Each fully double, white flower head of
this Lacecap Hydrangea looks like a
mini bridal bouquet.

Buy Now



The world's
ONLY pink
blueberry!

Pink Lemonade Blueberry

Be one of the first to grow pink
blueberries, packed with powerful
antioxidants and a mild, sweet flavor!

Buy Now